



SAN DER<sup>®</sup>

2017-2018  
PRODUCT & PRICE CATALOGUE

REFNO. 0198/HAYDAR ALIYEV MUZEUM-BAKÜ/AZERBAIJAN



WORLD FAMOUS ARCHITECT ZAHA HADID PREFERRED SANDER PRODUCTS IN THE HAYDAR ALIYEV CENTER PROJECT...

REFNO. 097/FLAME TOWERS-BAKÜ/AZERBAIJAN



SANDER PRODUCTS ARE USED IN THE FLAME TOWERS PROJECT THAT WAS GRANTED THE "BEST HOTEL AND TOURISM COMPLEX" AWARD FROM MIPIM 2013...

REFNO. 059/ MOOI SPORTS CLUBBING-ISTANBUL/TURKEY



IN MOOI, ONE OF THE MOST TRENDING SPORTS CLUB OF ISTANBUL, SANDER PRODUCTS WERE PREFERRED...

16 YEARS OF EXPERIENCE ...

360.000 M<sup>2</sup> PRODUCTION CAPACITY PER YEAR...

AUTOMATED CNC MACHINE PARKOUR

IN PANEL AND METAL PROCESSING...

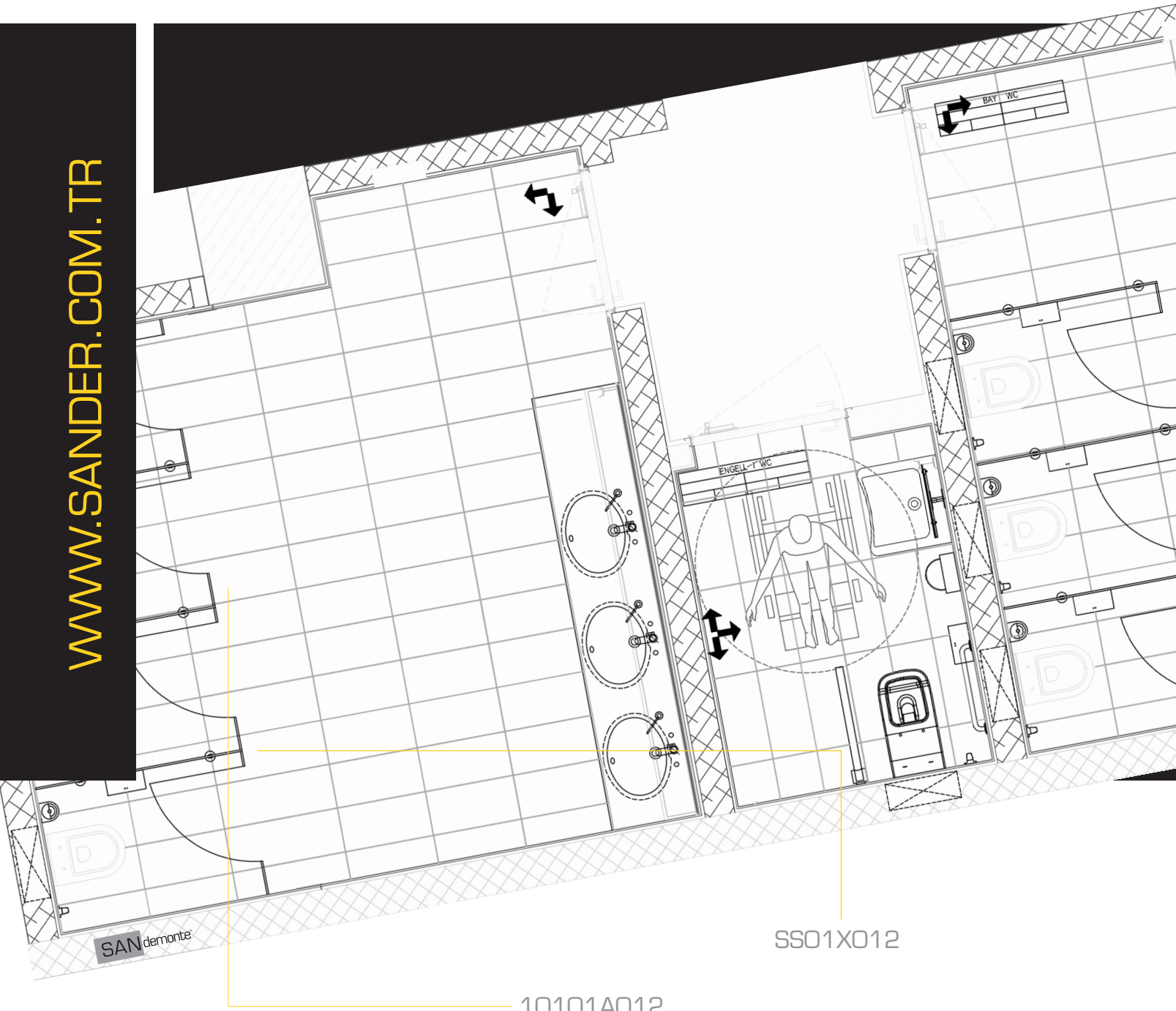
- Realizing the most accurate projects at minimum costs,
- With the maximum speed which the project owners need the most,
- Providing value added products to consumers using 100% domestic panel,
- Becoming always one step ahead with the accessory production capacity on European standards,

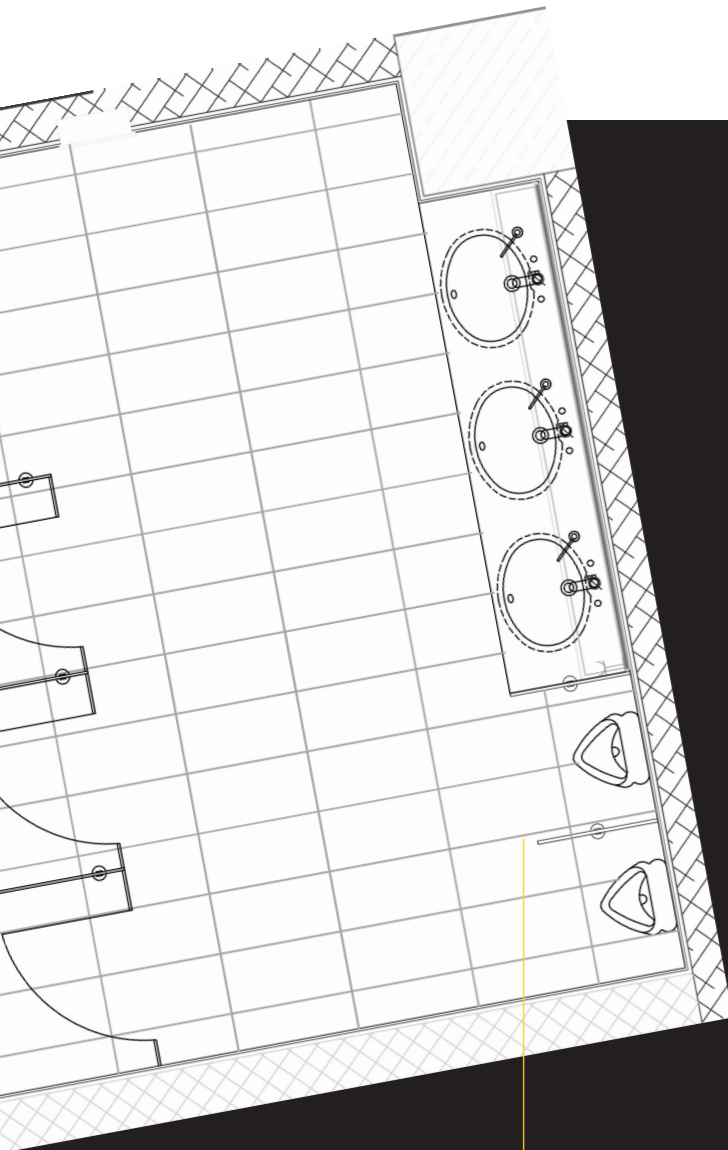
We, as **SANDER**,

with our brand **SANDEMONTE**, **SANAKSESUAR** and **SANEXCLUSIVE**, created as a result of our innovative perspective and completing its creation as of 2017, continue to adapt to the developing and changing markets conditions as fast as possible...









Our aim is to;  
Go beyond the limits with our product quality and understand of service and become a world brand...







10401A012

	CABINET SEPARATORS	P.6
	CABLE SEPARATOR ACCESSORIES	P.12
	LOCKERS	P.20
	LOCKER ACCESSORIES	P.26
	COUNTER SYSTEMS	P.32
	BENCHES	P.36
	SCREEN SEPARATORS	P.37
	TABLE PLATFORMS	P.38

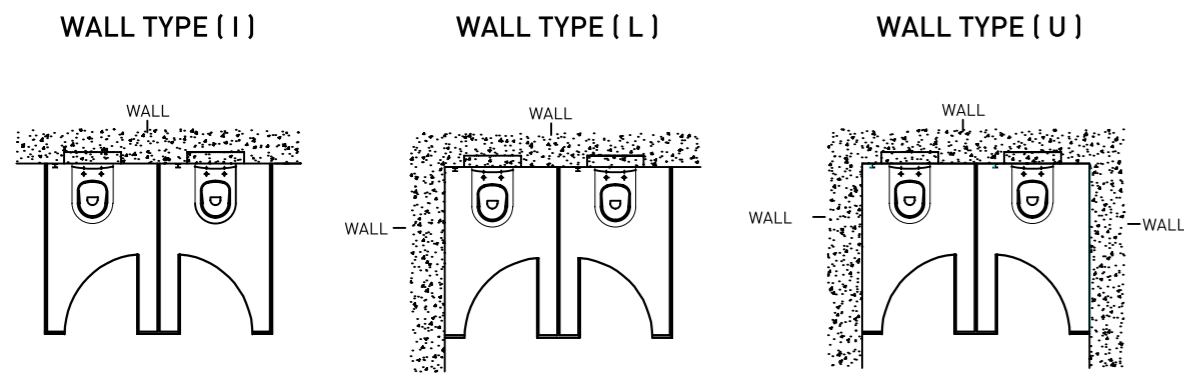
**SAN**demonte®

PROVIDES PRODUCTS SUITABLE FOR YOUR PROJECTS AND WHICH ARE **EASILY ASSEMBLED**

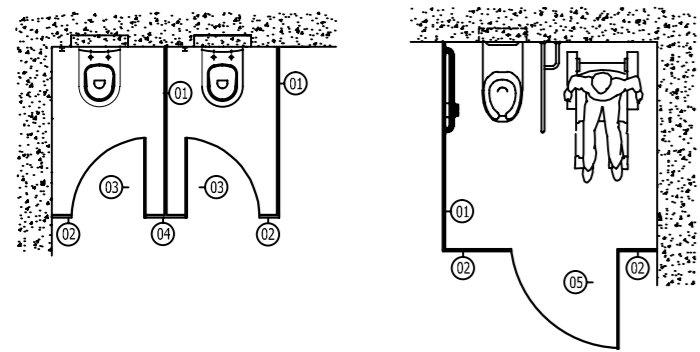
**SAN**aksesuar®

PROVIDES **HIGH QUALITY** PRODUCTS WHICH GAIN ELEGANCE, AESTHETIC AND PRODUCTIVITY FOR YOUR PROJECTS...

WALL TYPES

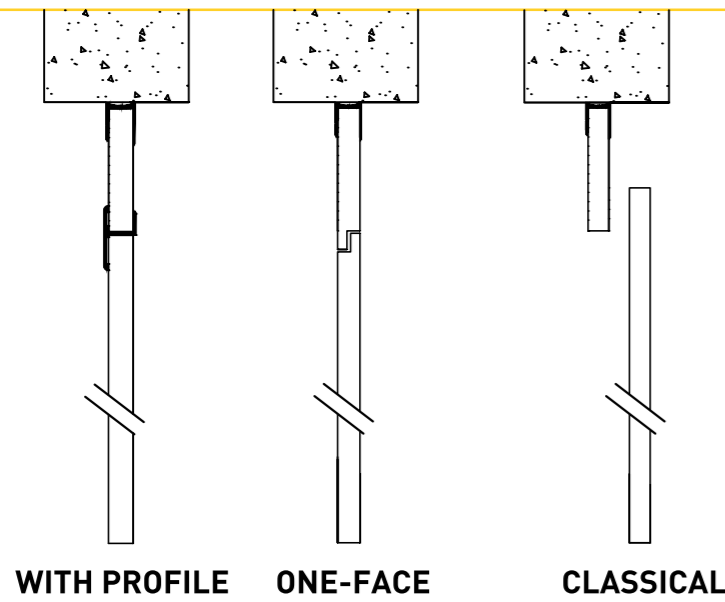


PANEL TYPES

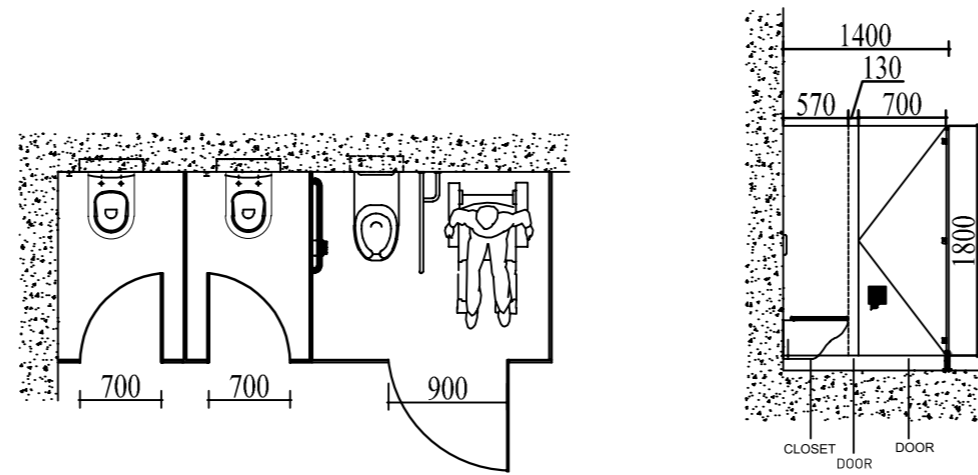


- 01 SEPARATION PANEL
- 02 WALL PANEL
- 03 DOOR STANDARD (70x180)
- 04 CENTER PANEL
- 05 HANDICAPPED DOOR (90x180)

DOOR PRODUCTION TYPES



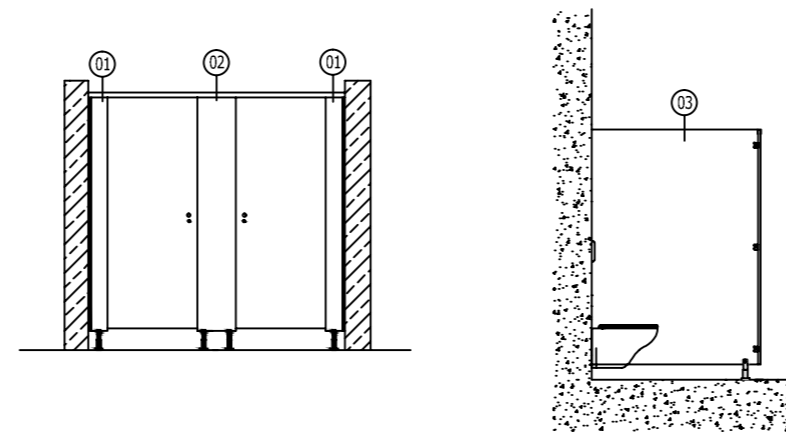
PANEL DIMENSIONING



DOOR DIMENSIONING					
MODEL	HEIGHT	STANDARD DOOR	STANDARD DOOR GAP	HANDICAPPED DOOR	HANDICAPPED DOOR GAP
MULTISILVER	1800	700	750	900	950
ORION	1800	700	750	900	950
PROXLINE	1800	700	700	900	900
STEELLINE	1800	700	700	900	900

SEPARATION PANEL DIMENSIONING			
HEIGHT	MIN. DEPTH	MAX. DEPTH	PLATE DIMENSION
1800	1400	1540	3660X1540
1800	1400	1400	3660X1400
2100	1400	1860	4200X1860
2100	1400	1400	4200X1400

TABLE FEET LAYOUT IN PANELS

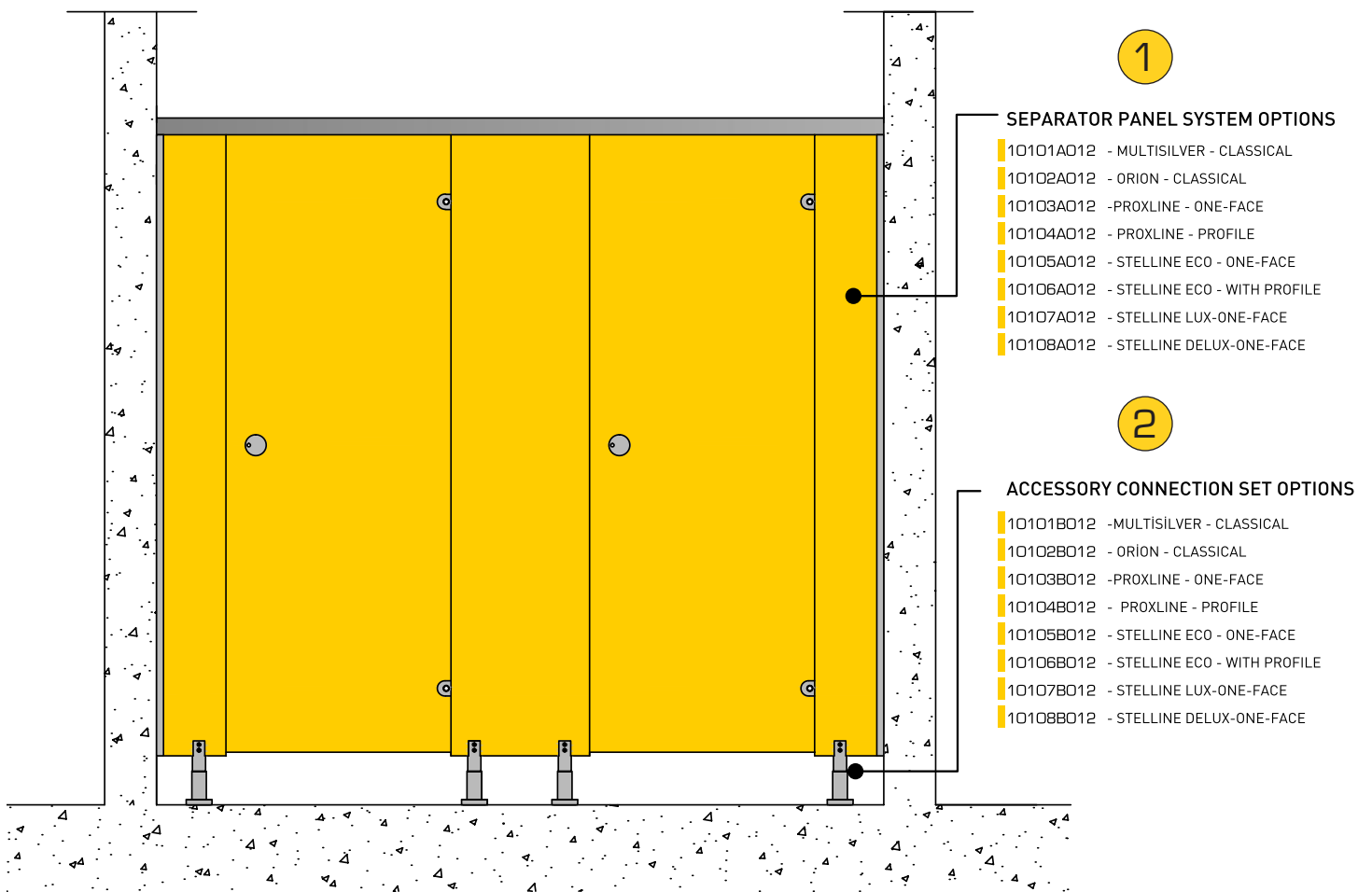


- 01 WALL PANEL : If the panel is bigger than 170mm, 1 table feet is installed.
- 02 CENTER PANEL : If the panel is bigger than 350mm, 2 table feet are installed.
- 03 SEPARATION : If there are no table feet 01 and 02, only 1 table feet is placed.

## CABINET SEPARATOR



# 2 STEPS OF CABINET PRICING



## MULTISILVER - 12 mm Classical Series



PRODUCT CODE	EXPLANATION	UNIT	U. PRICE*
<b>10101A012</b>	Separator Panel System	M <sup>2</sup>	70,00 €

\* 1 m<sup>2</sup> unit price for 1 cabinet

PANELS	: 12 mm GENTAŞ Brand Compact Laminated		
HEIGHT	: 1830 mm - 1860 mm - 2100 mm		
DEPTH	: 1400 mm - 2100 mm Maximum		
WIDTH	: Production is made according to project.		
COLOR	: WHITE RAL 9003 BEIGE RAL 1015	ANTHRACITE GRAY RAL 9007 LIGHT GRAY RAL 7046	



<b>10101B012</b>	Separator Connection Set	SET	42,00 €
------------------	--------------------------	-----	---------

\* Set price for 1 cabinet

CONNECTIONS	: 12 mm Sander Brand Aluminum Dull Connection Elements		
CONTENTS OF SET	<b>SM04M012</b> - Lock 1 pc	<b>PS0112M</b> - U-Panel Profile 2 pcs	
	<b>SM02M012</b> - Feet 1 pc	<b>PS0212M</b> - Upper Panel Profile 1 m.	
	<b>SM07M012</b> - Hanger 1 pc		
	<b>SM03M012</b> - Hinge 2 pcs		

\*Set contents are for 1 cabinet

ACCESSORIES : PAGE 14

## ORION - 12 mm Classical Series



PRODUCT CODE	EXPLANATION	UNIT	U. PRICE*
<b>10102A012</b>	Separator Panel System	M <sup>2</sup>	70,00 €

\* 1 m<sup>2</sup> unit price for 1 cabinet

PANELS	: 12 mm GENTAŞ Brand Compact Laminated		
HEIGHT	: 1830 mm - 1860 mm - 2100 mm		
DEPTH	: 1400 mm - 2100 mm Maximum		
WIDTH	: Production is made according to project.		
COLOR	: WHITE RAL 9003 BEIGE RAL 1015	ANTHRACITE GRAY RAL 9007 LIGHT GRAY RAL 7046	



<b>10102B012</b>	Separator Connection Set	SET	62,00 €
------------------	--------------------------	-----	---------

\* Set price for 1 cabinet

CONNECTIONS	: 12 mm Sander Brand Aluminum Dull Connection Elements		
CONTENTS OF SET	<b>SO05P012</b> - Lock 1 pc	<b>PS0112P</b> - U-Panel Profile 2 pcs	
	<b>SO02P012</b> - Feet 1 pc	<b>PS0212P</b> - Upper Panel Profile 1 m.	
	<b>SO08P012</b> - Hanger 1 pc		
	<b>SO03P012</b> - Hinge 2 pcs		

\*Set contents are for 1 cabinet

ACCESSORIES : PAGE 15



PROXLINE - 12 mm One-face Series



PRODUCT CODE	EXPLANATION	UNIT	U. PRICE*
<b>10103A012</b>	Separator Panel System	M <sup>2</sup>	72,00 €

\* 1 m<sup>2</sup> unit price for 1 cabinet

PANELS	: 12 mm GENTAŞ Brand Compact Laminated		
HEIGHT	: 1830 mm - 1860 mm - 2100 mm		
DEPTH	: 1400 mm - 2100 mm Maximum		
WIDTH	: Production is made according to project.		
COLOR	: WHITE RAL 9003	ANTHRACITE GRAY RAL 9007	
	: BEIGE RAL 1015	LIGHT GRAY RAL 7046	



<b>10103B012</b>	Separator Connection Set	SET	52,00 €
------------------	--------------------------	-----	---------

\* Set price for 1 cabinet

CONNECTIONS	: 12 mm Sander Brand Aluminum Dull Connection Elements		
CONTENTS OF SET	<b>SR04M012</b> - Lock 1 pc	<b>PS0112M</b> - U-Panel Profile 2 pcs	
	<b>SR02M012</b> - Feet 1 pc	<b>PS0212M</b> - Upper Panel Profile 1 m.	
	<b>SR07M012</b> - Hanger 1 pc		
	<b>SR03M012</b> - Hinge 2 pcs		

\*Set contents are for 1 cabinet

ACCESSORIES : PAGE 18

PROXLINE - 12 mm Profile Series



PRODUCT CODE	EXPLANATION	UNIT	U. PRICE*
<b>10104A012</b>	Separator Panel System	M <sup>2</sup>	70,00 €

\* 1 m<sup>2</sup> unit price for 1 cabinet

PANELS	: 12 mm GENTAŞ Brand Compact Laminated		
HEIGHT	: 1830 mm - 1860 mm - 2100 mm		
DEPTH	: 1400 mm - 2100 mm Maximum		
WIDTH	: Production is made according to project.		
COLOR	: WHITE RAL 9003	ANTHRACITE GRAY RAL 9007	
	: BEIGE RAL 1015	LIGHT GRAY RAL 7046	



<b>10104B012</b>	Separator Connection Set	SET	62,00 €
------------------	--------------------------	-----	---------

\* Set price for 1 cabinet

CONNECTIONS	: 12 mm Sander Brand Aluminum Dull Connection Elements		
CONTENTS OF SET	<b>SR04M012</b> - Lock 1 pc	<b>PS0112M</b> - U-Panel Profile 2 pcs	
	<b>SR02M012</b> - Feet 1 pc	<b>PS0212M</b> - Upper Panel Profile 1 m.	
	<b>SR07M012</b> - Hanger 1 pc		
	<b>SR03M012</b> - Hinge 2 pcs		

\*Set contents are for 1 cabinet

ACCESSORIES : PAGE 18

## STELLINE ECO - 12 mm One-face Series



PRODUCT CODE	EXPLANATION	UNIT	U. PRICE*
<b>10105A012</b>	Separator Panel System	M <sup>2</sup>	72,00 €
* 1 m <sup>2</sup> unit price for 1 cabinet			
PANELS	: 12 mm GENTAŞ Brand Compact Laminated		
HEIGHT	: 1830 mm - 1860 mm - 2100 mm		
DEPTH	: 1400 mm - 2100 mm Maximum		
WIDTH	: Production is made according to project.		
COLOR	: WHITE RAL 9003 BEIGE RAL 1015	ANTHRACITE GRAY RAL 9007 LIGHT GRAY RAL 7046	



<b>10105B012</b>	Separator Connection Set	SET	66,00 €
* Set price for 1 cabinet			
CONNECTIONS	: 12 mm Sander Brand Aluminum Dull Connection Elements		
CONTENTS OF SET:	<b>SS05X012</b> - Lock 1 pc	<b>SS08X012</b> - U-Panel Profile (Aim) 2 pcs	
	<b>SS04X012</b> - Feet 1 pc	<b>PS0112X</b> - Upper Panel Profile (Aim) 1 m.	
	<b>SS02X012</b> - Hanger 1 pc		
	<b>SS03X012</b> - Hinge 2 pcs		
*Set contents are for 1 cabinet			
ACCESSORIES	: PAGE 16-17		

## STELLINE ECO - 12 mm Profile Series



PRODUCT CODE	EXPLANATION	UNIT	U. PRICE*
<b>10106A012</b>	Separator Panel System	M <sup>2</sup>	70,00 €
* 1 m <sup>2</sup> unit price for 1 cabinet			
PANELS	: 12 mm GENTAŞ Brand Compact Laminated		
HEIGHT	: 1830 mm - 1860 mm - 2100 mm		
DEPTH	: 1400 mm - 2100 mm Maximum		
WIDTH	: Production is made according to project.		
COLOR	: WHITE RAL 9003 BEIGE RAL 1015	ANTHRACITE GRAY RAL 9007 LIGHT GRAY RAL 7046	



<b>10106B012</b>	Separator Connection Set	SET	76,00 €
* Set price for 1 cabinet			
CONNECTIONS	: 12 mm Sander Brand Aluminum Dull Connection Elements		
CONTENTS OF SET:	<b>SS05X012</b> - Lock 1 pc	<b>PS0112X</b> - U-Panel Profile 2 pcs	
	<b>SS04X012</b> - Feet 1 pc	<b>PS0212X</b> - Upper Panel Profile (Aim) 1 m.	
	<b>SS08X012</b> - Hanger 1 pc	<b>PS0312X</b> - Door Profile (Alm) 2 Adet	
	<b>SS03X012 - SS04X012</b> - Hinge 2 pcs		
*Set contents are for 1 cabinet			
ACCESSORIES	: PAGE 16-17		

**STELLINE LUX - 12 mm One-face Series**



PRODUCT CODE	EXPLANATION	UNIT	U. PRICE*
<b>10107A012</b>	Separator Panel System	M <sup>2</sup>	72,00 €

\* 1 m<sup>2</sup> unit price for 1 cabinet

PANELS	: 12 mm GENTAŞ Brand Compact Laminated
HEIGHT	: 1830 mm - 1860 mm - 2100 mm
DEPTH	: 1400 mm - 2100 mm Maximum
WIDTH	: Production is made according to project.
COLOR	: WHITE RAL 9003 ANTHRACITE GRAY RAL 9007 BEIGE RAL 1015 LIGHT GRAY RAL 7046



<b>10107B012</b>	Separator Connection Set	SET	124,00 €
------------------	--------------------------	-----	----------

\* Set price for 1 cabinet

CONNECTIONS	: 12 mm Sander Brand 304 Quality Stainless Steel Connection Elements										
CONTENTS OF SET:	<table> <tr> <td><b>SS05X012</b> - Lock 1 pc</td> <td><b>PS0112X</b> - U-Panel Profile (Aim) 2 pcs</td> </tr> <tr> <td><b>S202X012</b> - Feet 1 pc</td> <td><b>PS0212S</b> - Upper Panel Pipe 1 m.</td> </tr> <tr> <td><b>SS08X012</b> - Hanger 1 pc</td> <td><b>SS10X012</b> - Upper Profile Connection 2 pcs</td> </tr> <tr> <td><b>SS03X012</b>   Hinge 2 pcs</td> <td><b>SS11X012</b> - Door Connection 2 pcs</td> </tr> <tr> <td><b>SS04X012</b></td> <td></td> </tr> </table>	<b>SS05X012</b> - Lock 1 pc	<b>PS0112X</b> - U-Panel Profile (Aim) 2 pcs	<b>S202X012</b> - Feet 1 pc	<b>PS0212S</b> - Upper Panel Pipe 1 m.	<b>SS08X012</b> - Hanger 1 pc	<b>SS10X012</b> - Upper Profile Connection 2 pcs	<b>SS03X012</b>   Hinge 2 pcs	<b>SS11X012</b> - Door Connection 2 pcs	<b>SS04X012</b>	
<b>SS05X012</b> - Lock 1 pc	<b>PS0112X</b> - U-Panel Profile (Aim) 2 pcs										
<b>S202X012</b> - Feet 1 pc	<b>PS0212S</b> - Upper Panel Pipe 1 m.										
<b>SS08X012</b> - Hanger 1 pc	<b>SS10X012</b> - Upper Profile Connection 2 pcs										
<b>SS03X012</b>   Hinge 2 pcs	<b>SS11X012</b> - Door Connection 2 pcs										
<b>SS04X012</b>											

\*Set contents are for 1 cabinet

ACCESSORIES : PAGE 16-17

**STELLINE DELUX - 12 mm One-face Series**



PRODUCT CODE	EXPLANATION	UNIT	U. PRICE*
<b>10108A012</b>	Separator Panel System	M <sup>2</sup>	72,00 €

\* 1 m<sup>2</sup> unit price for 1 cabinet

PANELS	: 12 mm GENTAŞ Brand Compact Laminated
HEIGHT	: 1830 mm - 1860 mm - 2100 mm
DEPTH	: 1400 mm - 2100 mm Maximum
WIDTH	: Production is made according to project.
COLOR	: WHITE RAL 9003 ANTHRACITE GRAY RAL 9007 BEIGE RAL 1015 LIGHT GRAY RAL 7046



<b>10108B012</b>	Separator Connection Set	SET	150,00 €
------------------	--------------------------	-----	----------

\* Set price for 1 cabinet

CONNECTIONS	: 12 mm Sander Brand 304 Quality Stainless Steel Connection Elements										
CONTENTS OF SET:	<table> <tr> <td><b>SS05X012</b> - Lock 1 pc</td> <td><b>PS0112X</b> - U-Panel Profile (Aim) 2 pcs</td> </tr> <tr> <td><b>S202X012</b> - Feet 1 pc</td> <td><b>PS0212X</b> - Upper Panel Pipe 1 m.</td> </tr> <tr> <td><b>SS08X012</b> - Hanger 1 pc</td> <td><b>SS10X012</b> - Upper Profile Connection 2 pcs</td> </tr> <tr> <td><b>SS03X012</b>   Hinge 2 pcs</td> <td><b>SS11X012</b> - Door Connection 2 pcs</td> </tr> <tr> <td><b>SS04X012</b></td> <td><b>SS09X012</b> - Delux Grip 2 pcs</td> </tr> </table>	<b>SS05X012</b> - Lock 1 pc	<b>PS0112X</b> - U-Panel Profile (Aim) 2 pcs	<b>S202X012</b> - Feet 1 pc	<b>PS0212X</b> - Upper Panel Pipe 1 m.	<b>SS08X012</b> - Hanger 1 pc	<b>SS10X012</b> - Upper Profile Connection 2 pcs	<b>SS03X012</b>   Hinge 2 pcs	<b>SS11X012</b> - Door Connection 2 pcs	<b>SS04X012</b>	<b>SS09X012</b> - Delux Grip 2 pcs
<b>SS05X012</b> - Lock 1 pc	<b>PS0112X</b> - U-Panel Profile (Aim) 2 pcs										
<b>S202X012</b> - Feet 1 pc	<b>PS0212X</b> - Upper Panel Pipe 1 m.										
<b>SS08X012</b> - Hanger 1 pc	<b>SS10X012</b> - Upper Profile Connection 2 pcs										
<b>SS03X012</b>   Hinge 2 pcs	<b>SS11X012</b> - Door Connection 2 pcs										
<b>SS04X012</b>	<b>SS09X012</b> - Delux Grip 2 pcs										

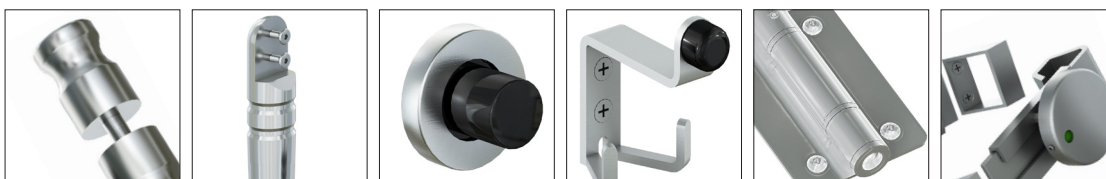
\*Set contents are for 1 cabinet

ACCESSORIES : PAGE 16-17

# CABLE SEPARATOR ACCESSORIES



LEG GRIP CONNECTION ELEMENTS LOCK  
HINGE HANGER



PRODUCT CODE **SMO1MO12**

EXPLANATION : ALUMINUM LEG 15 CM  
 UNIT : PC  
 SALE PRICE : 7,14 €  
 COLOR : DULL  
 DIMENSION : 12/13 mm



PRODUCT CODE **SMO2MO12**

EXPLANATION : ALUMINUM LEG 10 CM  
 UNIT : PC  
 SALE PRICE : 6,19 €  
 COLOR : DULL  
 DIMENSION : 12/13 mm



PRODUCT CODE **SMO3MO12**

EXPLANATION : ALUMINUM HINGE  
 UNIT : PC  
 SALE PRICE : 5,47 €  
 COLOR : DULL  
 DIMENSION : 12/13 mm



PRODUCT CODE **SMO4MO12**

EXPLANATION : ALUMINUM LOCK  
 UNIT : PC  
 SALE PRICE : 8,09 €  
 COLOR : DULL  
 DIMENSION : 12/13 mm



PRODUCT CODE **SMO5MO12**

EXPLANATION : ALUMINUM  
 U PANEL CONNECTION  
 UNIT : PC  
 SALE PRICE : 1,67 €  
 COLOR : DULL  
 DIMENSION : 12/13 mm



PRODUCT CODE **SMO6MO12**

EXPLANATION : ALUMINUM L CORNER  
 CONNECTION  
 UNIT : PC  
 SALE PRICE : 1,43 €  
 COLOR : DULL  
 DIMENSION : 12/13 mm



PRODUCT CODE **SMO7MO12**

EXPLANATION : ALUMINUM HANGER  
 UNIT : PC  
 SALE PRICE : 1,43 €  
 COLOR : DULL  
 DIMENSION : 12/13 mm



PRODUCT CODE **SMO8MO12**

EXPLANATION : ALUMINUM GRIP  
 UNIT : PC  
 SALE PRICE : 6,66 €  
 COLOR : DULL  
 DIMENSION : 12/13 mm



PRODUCT CODE **S001P012**

EXPLANATION : ALUMINUM LEG 15 CM  
 UNIT : PC  
 SALE PRICE : 12,85 €  
 COLOR : GLOSS  
 DIMENSION : 12/13 mm



PRODUCT CODE **S002P012**

EXPLANATION : ALUMINUM LEG 10 CM  
 UNIT : PC  
 SALE PRICE : 9,52 €  
 COLOR : GLOSS  
 DIMENSION : 12/13 mm



PRODUCT CODE **S003P012**

EXPLANATION : ALUMINUM HINGE  
 UNIT : PC  
 SALE PRICE : 8,33 €  
 COLOR : GLOSS  
 DIMENSION : 12/13 mm



PRODUCT CODE **S005P012**

EXPLANATION : ALUMINUM LOCK  
 UNIT : PC  
 SALE PRICE : 8,64 €  
 COLOR : GLOSS  
 DIMENSION : 12/13 mm



PRODUCT CODE **S006P012**

EXPLANATION : ALUMINUM U PANEL CONNECTION  
 UNIT : PC  
 SALE PRICE : 2,38 €  
 COLOR : GLOSS  
 DIMENSION : 12/13 mm



PRODUCT CODE **S008P012**

EXPLANATION : ALUMINUM HANGER  
 UNIT : PC  
 SALE PRICE : 1,79 €  
 COLOR : GLOSS  
 DIMENSION : 12/13 mm



PRODUCT CODE **S009P012**

EXPLANATION : ALUMINUM GRIP  
 UNIT : PC  
 SALE PRICE : 6,66 €  
 COLOR : GLOSS  
 DIMENSION : 12/13 mm



**PRODUCT CODE** SSO1XO12

**EXPLANATION** : 304 STAINLESS STEEL LEG  
15 CM

**UNIT** : PC

**SALE PRICE** : 17,60 €

**COLOR** : INOX

**DIMENSION** : 12/13 mm



**PRODUCT CODE** SSO2XO12

**EXPLANATION** : 304 STAINLESS STEEL LEG  
10 CM

**UNIT** : PC

**SALE PRICE** : 16,40 €

**COLOR** : INOX

**DIMENSION** : 12/13 mm



**PRODUCT CODE** SSO3XO12

**EXPLANATION** : 304 STAINLESS STEEL  
WITH HINGE SPRING

**UNIT** : PC

**SALE PRICE** : 13,30 €

**COLOR** : INOX

**DIMENSION** : 12/13 mm



**PRODUCT CODE** SSO4XO12

**EXPLANATION** : 304 STAINLESS STEEL  
WITHOUT HINGE SPRING

**UNIT** : PC

**SALE PRICE** : 11,20 €

**COLOR** : INOX

**DIMENSION** : 12/13 mm



**PRODUCT CODE** SSO5XO12

**EXPLANATION** : 304 STAINLESS STEEL  
LOCK

**UNIT** : PC

**SALE PRICE** : 19,80 €

**COLOR** : INOX

**DIMENSION** : 12/13 mm



**PRODUCT CODE** SSO6XO12

**EXPLANATION** : 304 STAINLESS STEEL  
U PANEL CONNECTION

**UNIT** : PC

**SALE PRICE** : 4,90 €

**COLOR** : INOX

**DIMENSION** : 12/13 mm



**PRODUCT CODE** SSO7XO12

**EXPLANATION** : 304 STAINLESS STEEL  
CORNER CONNECTION

**UNIT** : PC

**SALE PRICE** : 4,60 €

**COLOR** : INOX

**DIMENSION** : 12/13 mm



**PRODUCT CODE** SSO8XO12

**EXPLANATION** : 304 STAINLESS STEEL  
HANGER

**UNIT** : PC

**SALE PRICE** : 5,20 €

**COLOR** : INOX

**DIMENSION** : 12/13 mm





**PRODUCT CODE** SSO9X012

**EXPLANATION** : 304 STAINLESS STEEL  
GRIP

**UNIT** : PC

**SALE PRICE** : 8,70 €

**COLOR** : INOX

**DIMENSION** : 12/13 mm



**PRODUCT CODE** SS10X012

**EXPLANATION** : 304 STAINLESS STEEL  
PANEL CONNECTION

**UNIT** : PC

**SALE PRICE** : 13,90 €

**COLOR** : INOX

**DIMENSION** : 12/13 mm



**PRODUCT CODE** SS11X012

**EXPLANATION** : 304 STAINLESS STEEL  
WALL CONNECTION

**UNIT** : PC

**SALE PRICE** : 8,60 €

**COLOR** : INOX

**DIMENSION** : 12/13 mm



**PRODUCT CODE** SS12X012

**EXPLANATION** : 304 STAINLESS STEEL  
UPPER PANEL PIPE ADAPTER

**UNIT** : PC

**SALE PRICE** : 3,50 €

**COLOR** : INOX

**DIMENSION** : 12/13 mm



**PRODUCT CODE** SS13X012

**EXPLANATION** : 304 STAINLESS STEEL  
90° CONNECTION ADAPTER

**UNIT** : PC

**SALE PRICE** : 5,50 €

**COLOR** : INOX

**DIMENSION** : 12/13 mm



**PRODUCT CODE** SS14X012

**EXPLANATION** : 304 STAINLESS STEEL  
DELUX GRIP 40

**UNIT** : PC

**SALE PRICE** : 13,00 €

**COLOR** : INOX

**DIMENSION** : 12/13 mm



**PRODUCT CODE** SS15X012

**EXPLANATION** : 304 STAINLESS STEEL  
DELUX GRIP 80

**UNIT** : PC

**SALE PRICE** : 18,00 €

**COLOR** : INOX

**DIMENSION** : 12/13 mm



**PRODUCT CODE** SS16X012

**EXPLANATION** : 304 STAINLESS STEEL  
DELUX GRIP 120

**UNIT** : PC

**SALE PRICE** : 25,00 €

**COLOR** : INOX

**DIMENSION** : 12/13 mm



**PRODUCT CODE** SRO1MO12

**EXPLANATION** : ALUMINUM LEG 15 CM  
**UNIT** : PC  
**SALE PRICE** : 10,62 €  
**COLOR** : DULL  
**DIMENSION** : 12/13 mm



**PRODUCT CODE** SRO2MO12

**EXPLANATION** : ALUMINUM LEG 10 CM  
**UNIT** : PC  
**SALE PRICE** : 9,50 €  
**COLOR** : DULL  
**DIMENSION** : 12/13 mm



**PRODUCT CODE** SRO3MO12

**EXPLANATION** : ALUMINUM HINGE  
**UNIT** : PC  
**SALE PRICE** : 6,90 €  
**COLOR** : DULL  
**DIMENSION** : 12/13 mm



**PRODUCT CODE** SRO4MO12

**EXPLANATION** : ALUMINUM LOCK  
**UNIT** : PC  
**SALE PRICE** : 14,22 €  
**COLOR** : DULL  
**DIMENSION** : 12/13 mm



**PRODUCT CODE** SRO5MO12

**EXPLANATION** : ALUMINUM  
 U PANEL CONNECTION  
**UNIT** : PC  
**SALE PRICE** : 1,67 €  
**COLOR** : DULL  
**DIMENSION** : 12/13 mm



**PRODUCT CODE** SRO6MO12

**EXPLANATION** : ALUMINUM L CORNER  
 CONNECTION  
**UNIT** : PC  
**SALE PRICE** : 1,43 €  
**COLOR** : DULL  
**DIMENSION** : 12/13 mm



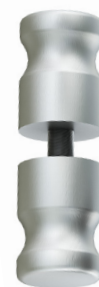
**PRODUCT CODE** SRO7MO12

**EXPLANATION** : ALUMINUM HANGER  
**UNIT** : PC  
**SALE PRICE** : 1,90 €  
**COLOR** : DULL  
**DIMENSION** : 12/13 mm



**PRODUCT CODE** SRO8MO12

**EXPLANATION** : ALUMINUM GRIP  
**UNIT** : PC  
**SALE PRICE** : 6,66 €  
**COLOR** : DULL  
**DIMENSION** : 12/13 mm



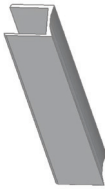
ALUMINUM

PRODUCT CODE **PSO112M**

EXPLANATION : U CONNECTION  
DULL PROFILE

UNIT : PC/183

SALE PRICE : 5,53 €



PRODUCT CODE **PSO112P**

EXPLANATION : U CONNECTION  
GLOSS PROFILE

UNIT : PC/183

SALE PRICE : 5,53 €



PRODUCT CODE **PSO112X**

EXPLANATION : U CONNECTION  
INOX PROFILE

UNIT : PC/183

SALE PRICE : 5,61 €



PRODUCT CODE **PSO212M**

EXPLANATION : UPPER PANEL  
CONNECTION  
DULL PROFILE

UNIT : PC/300

SALE PRICE : 23,70 €



PRODUCT CODE **PSO212P**

EXPLANATION : UPPER PANEL  
CONNECTION  
GLOSS PROFILE

UNIT : PC/300

SALE PRICE : 23,70 €



PRODUCT CODE **PSO212X**

EXPLANATION : UPPER PANEL  
CONNECTION  
INOX PROFILE

UNIT : PC/300

SALE PRICE : 24,35 €

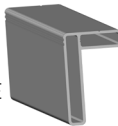


PRODUCT CODE **PSO512M**

EXPLANATION : UPPER PANEL  
CONNECTION  
DULL PROFILE

UNIT : PC/300

SALE PRICE : 23,70 €



PRODUCT CODE **PSO512P**

EXPLANATION : UPPER PANEL  
CONNECTION  
GLOSS PROFILE

UNIT : PC/300

SALE PRICE : 23,70 €



PRODUCT CODE **PSO512X**

EXPLANATION : UPPER PANEL  
CONNECTION  
INOX PROFILE

UNIT : PC/300

SALE PRICE : 24,35 €

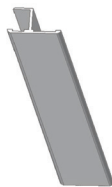


PRODUCT CODE **PSO312X**

EXPLANATION : DOOR  
INOX PROFILE

UNIT : PC/183

SALE PRICE : 4,76 €



PRODUCT CODE **PSO312M**

EXPLANATION : DOOR  
DULL PROFILE

UNIT : PC/183

SALE PRICE : 4,76 €



PRODUCT CODE **PSO412M**

EXPLANATION : CORNER  
CONNECTION  
DULL PROFILE

UNIT : PC/183

SALE PRICE : 8,54 €



PRODUCT CODE **PSO412P**

EXPLANATION : CORNER  
CONNECTION  
GLOSS PROFILE

UNIT : PC/183

SALE PRICE : 8,54 €



PRODUCT CODE **PSO412X**

EXPLANATION : CORNER  
CONNECTION  
INOX PROFILE

UNIT : PC/183

SALE PRICE : 8,77 €



304 STAINLESS STEEL

PRODUCT CODE **PSO412S**

EXPLANATION : CORNER  
CONNECTION  
PROFILE

UNIT : PC/183

SALE PRICE : 26,00 €



PRODUCT CODE **PSO212S**

EXPLANATION : UPPER PANEL  
PIPE

UNIT : PC/300

SALE PRICE : 98,29 €



PRODUCT CODE **PSO112S**

EXPLANATION : U CONNECTION  
PROFILE

UNIT : PC/183

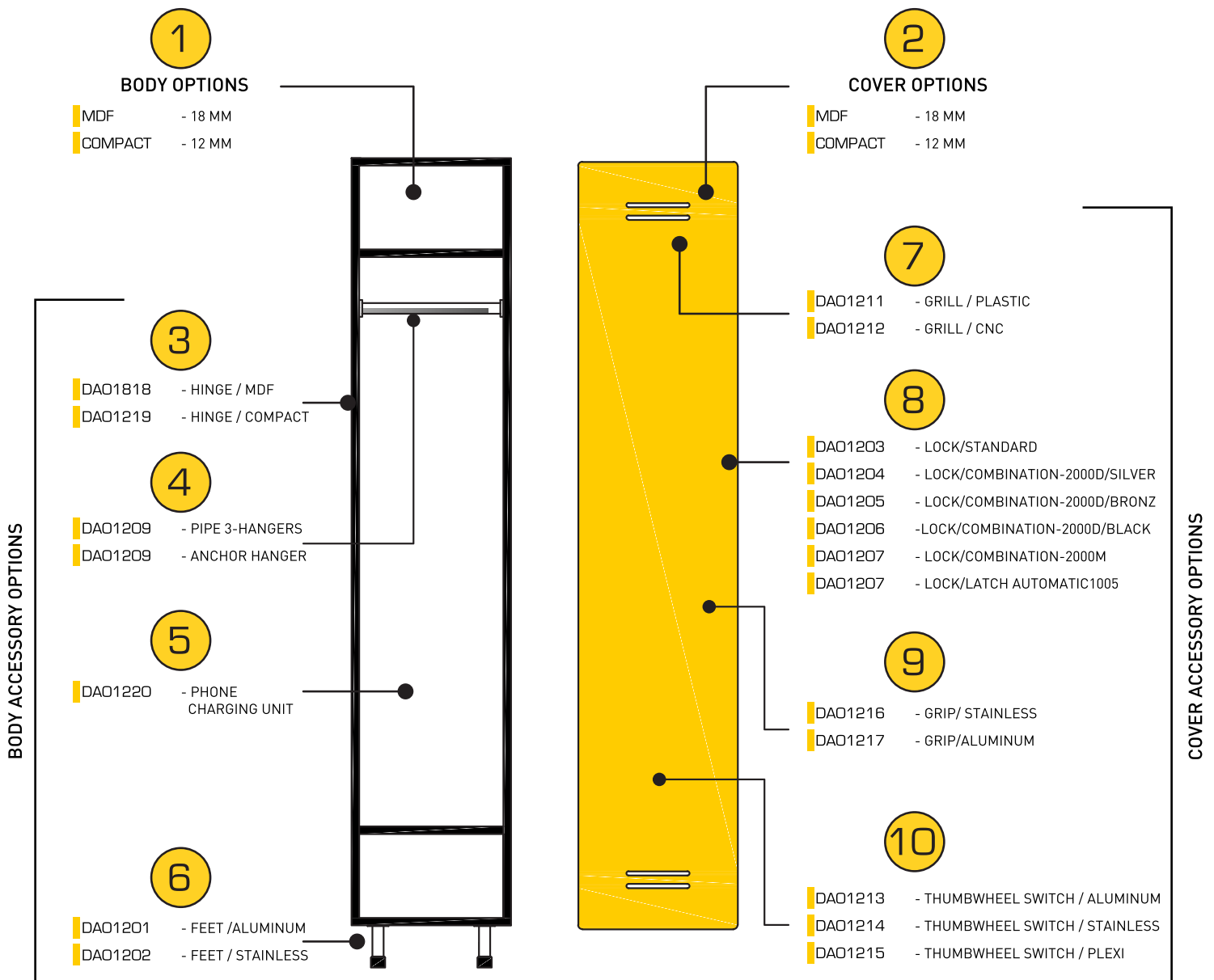
SALE PRICE : 12,60 €



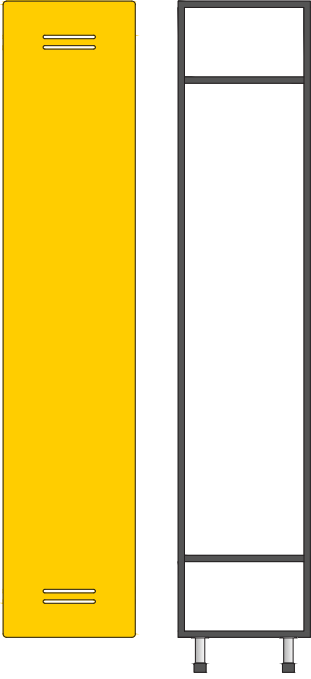
# LOCKERS



# 10 STEPS OF LOCKER PRICING



## SINGLE COVER



PRODUCT CODE	EXPLANATION		UNIT	U. PRICE*
10201A018	BODY Module	18 MDF	Module	74,00 €
10201A012	BODY Module	12 COMPACT	Module	240,00 €
				* Body price for 1 locker
10201B018	COVER Module	18 MDF	Module	24,00 €
10201B012	COVER Module	12 COMPACT	Module	50,00 €
				* Cover price for 1 locker

PANELS : 12 mm GENTAŞ Brand Compact Laminated

HEIGHT : 1800 mm

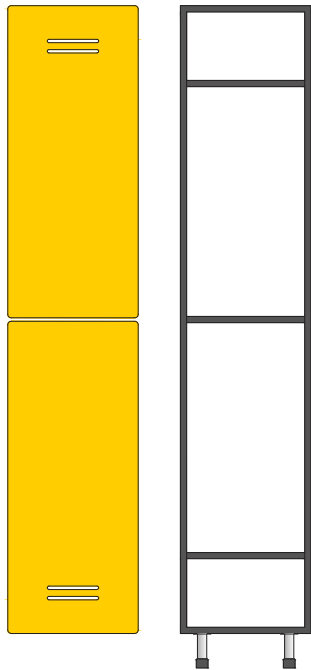
DEPTH : 520 mm

WIDTH : 380 mm

COLOR : COMPACT - **WHITE RAL 9003** **ANTHRACITE GRAY RAL 9007**  
**BEIGE RAL 1015** **LIGHT GRAY RAL 7046**  
MDF - **WHITE RAL 9003**

ACCESSORIES: PAGE 28-29

## TWO-COVER



PRODUCT CODE	EXPLANATION		UNIT	U. PRICE*
10202A018	BODY Module	18 MDF	Module	80,00 €
10202A012	BODY Module	12 COMPACT	Module	256,00 €
				* Body price for 1 locker
10202B018	COVER Module	18 MDF	Module	26,00 €
10202B012	COVER Module	12 COMPACT	Module	52,00 €
				* Cover price for 1 locker

PANELS : 12 mm GENTAŞ Brand Compact Laminated

HEIGHT : 1800 mm

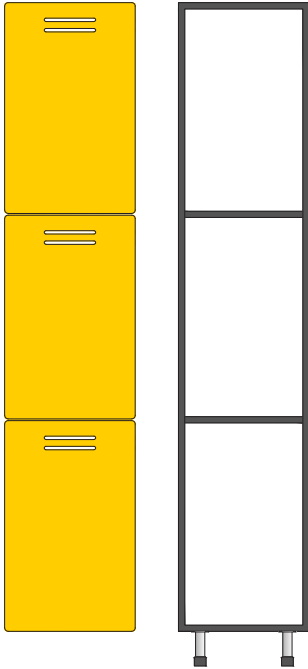
DEPTH : 520 mm

WIDTH : 380 mm

COLOR : COMPACT - **WHITE RAL 9003** **ANTHRACITE GRAY RAL 9007**  
**BEIGE RAL 1015** **LIGHT GRAY RAL 7046**  
MDF - **WHITE RAL 9003**

ACCESSORIES: PAGE 28-29

**THREE-COVER**

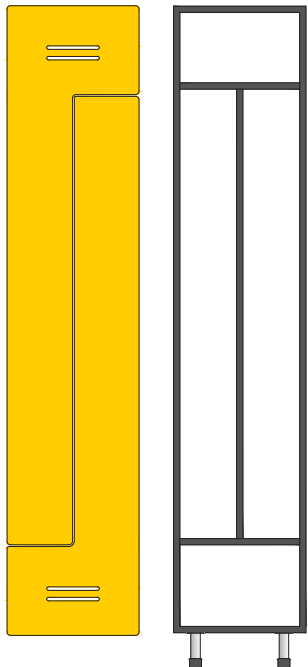


PRODUCT CODE	EXPLANATION	UNIT	U. PRICE*
10203A018	BODY Module 18 MDF	Module	78,00 €
10203A012	BODY Module 12 COMPACT	Module	260,00 €
* Body price for 1 locker			
10203B018	COVER Module 18 MDF	Module	28,00 €
10203B012	COVER Module 12 COMPACT	Module	56,00 €
* Cover price for 1 locker			

PANELS : 12 mm GENTAŞ Brand Compact Laminated  
 HEIGHT : 1800 mm  
 DEPTH : 520 mm  
 WIDTH : 380 mm  
 COLOR : COMPACT - **WHITE RAL 9003** **ANTHRACITE GRAY RAL 9007**  
                                   **BEIGE RAL 1015** **LIGHT GRAY RAL 7046**  
                                   MDF - **WHITE RAL 9003**

ACCESSORIES: PAGE 28-29

**Z COVER**



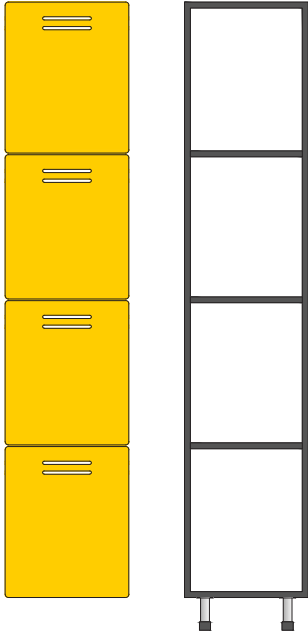
PRODUCT CODE	EXPLANATION	UNIT	U. PRICE*
10206A018	BODY Module 18 MDF	Module	91,00 €
10206A012	BODY Module 12 COMPACT	Module	253,00 €
* Body price for 1 locker			
10206B018	COVER Module 18 MDF	Module	PRODUCTION IS NOT AVAILABLE
10206B012	COVER Module 12 COMPACT	Module	70,00 €
* Cover price for 1 locker			

PANELS : 12 mm GENTAŞ Brand Compact Laminated  
 HEIGHT : 1800 mm  
 DEPTH : 520 mm  
 WIDTH : 380 mm  
 COLOR : COMPACT - **WHITE RAL 9003** **ANTHRACITE GRAY RAL 9007**  
                                   **BEIGE RAL 1015** **LIGHT GRAY RAL 7046**  
                                   MDF - **WHITE RAL 9003**

ACCESSORIES: PAGE 28-29

# DEPOSIT LOCKERS

## FOUR-COVER

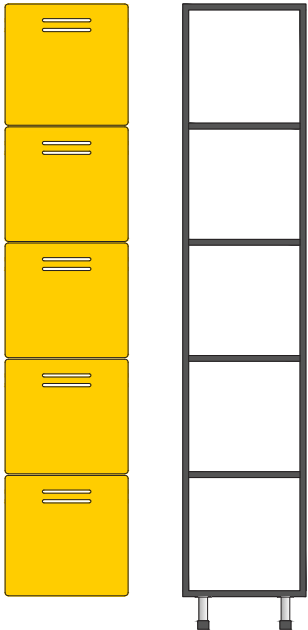


PRODUCT CODE	EXPLANATION		UNIT	U. PRICE*
10204A018	BODY Module	18 MDF	Module	75,00 €
10204A012	BODY Module	12 COMPACT	Module	258,00 €
* Body price for 1 locker				
10204B018	COVER Module	18 MDF	Module	26,00 €
10204B012	COVER Module	12 COMPACT	Module	60,00 €
* Cover price for 1 locker				

PANELS	: 12 mm GENTAŞ Brand Compact Laminated
HEIGHT	: 1800 mm
DEPTH	: 520 mm
WIDTH	: 380 mm
COLOR	: COMPACT - <b>WHITE RALE 9003 ANTHRACITE GRAY RALE 9007</b> <b>BEIGE RALE 1015 LIGHT GRAY RALE 7046</b>
	MDF - <b>WHITE RALE 9003</b>

ACCESSORIES: PAGE 28-29

## FIVE-COVER

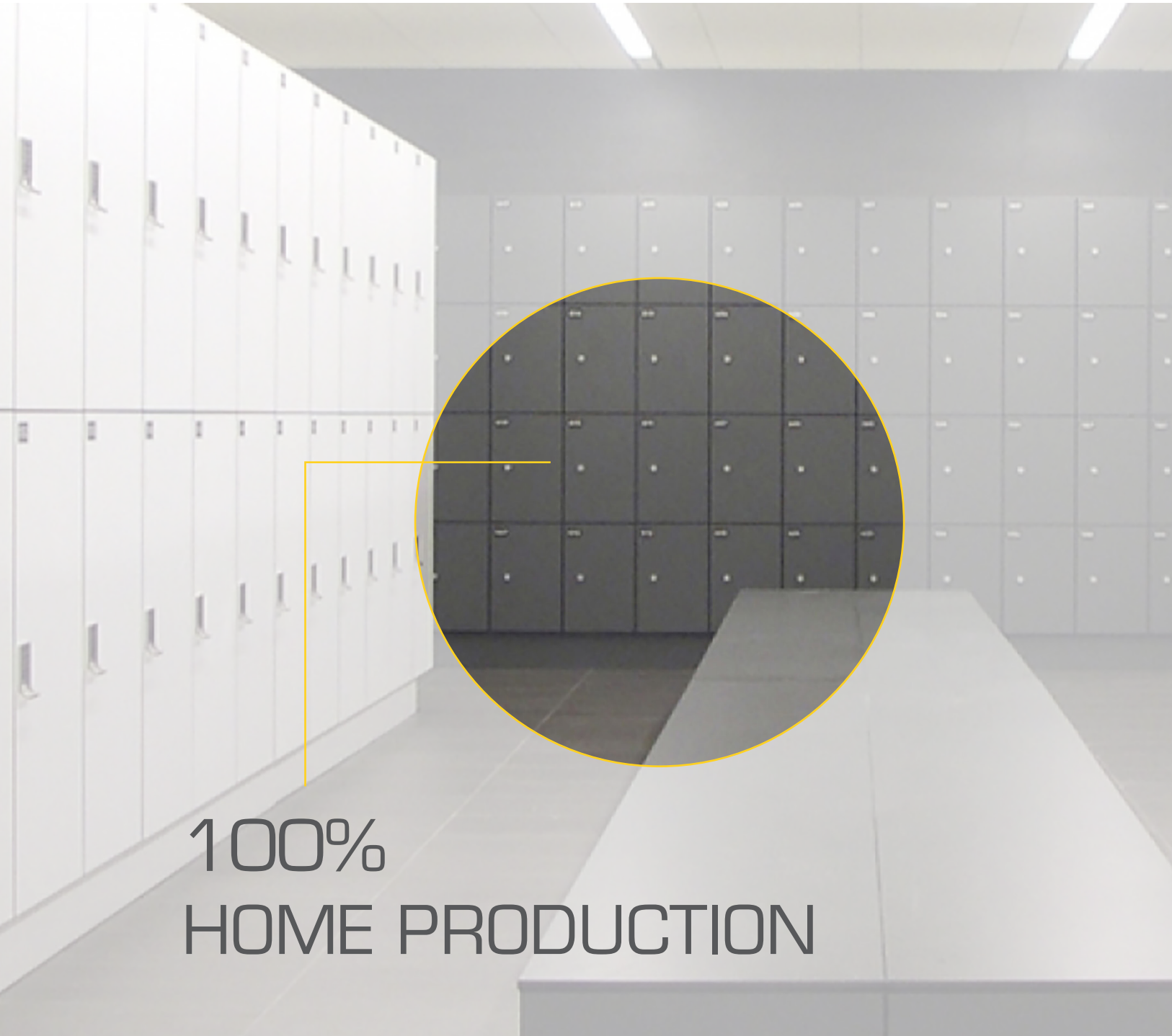


PRODUCT CODE	EXPLANATION		UNIT	U. PRICE*
10205A018	BODY Module	18 MDF	Module	84,00 €
10205A012	BODY Module	12 COMPACT	Module	290,00 €
* Body price for 1 locker				
10205B018	COVER Module	18 MDF	Module	30,00 €
10205B012	COVER Module	12 COMPACT	Module	70,00 €
* Cover price for 1 locker				

PANELS	: 12 mm GENTAŞ Brand Compact Laminated
HEIGHT	: 1800 mm
DEPTH	: 520 mm
WIDTH	: 380 mm
COLOR	: COMPACT - <b>WHITE RALE 9003 ANTHRACITE GRAY RALE 9007</b> <b>BEIGE RALE 1015 LIGHT GRAY RALE 7046</b>
	MDF - <b>WHITE RALE 9003</b>

ACCESSORIES: PAGE 28-29



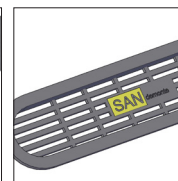
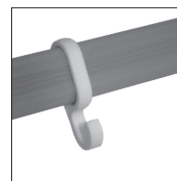


100%  
HOME PRODUCTION

# LOCKER ACCESSORIES



GRILL  
GRIP  
LEG  
HINGE  
THUMBWHEEL  
SWITCH  
CHARGING  
UNIT  
LOCK



# LOCKER ACCESSORIES

PRODUCT CODE **DAO1201**

EXPLANATION : ALUMINUM LEG

UNIT PRICE : 2,50 €



PRODUCT CODE **DAO1202**

EXPLANATION : STAINLESS STEEL LEG

UNIT PRICE : 3,00 €



PRODUCT CODE **DAO1203**

EXPLANATION : STANDARD LOCK  
MASTER SINGLE

UNIT PRICE : 7,00 €



PRODUCT CODE **DAO1204**

EXPLANATION : COMBINATION LOCK  
2000D / SILVER

UNIT PRICE : 71,00 €



PRODUCT CODE **DAO1205**

EXPLANATION : COMBINATION LOCK  
2000D / BRONZ

UNIT PRICE : 71,00 €



PRODUCT CODE **DAO1206**

EXPLANATION : COMBINATION LOCK  
2000D / BLACK

UNIT PRICE : 71,00 €



PRODUCT CODE **DAO1207**

EXPLANATION : COMBINATION LOCK  
1001KS / M

UNIT PRICE : 68,00 €



PRODUCT CODE **DAO1808**

EXPLANATION : LATCH LOCK  
AUTOMATIC 1005

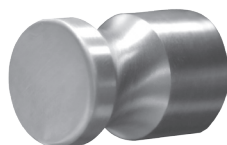
UNIT PRICE : 58,00 €



PRODUCT CODE **DAO1216**

EXPLANATION : STAINLESS GRIP

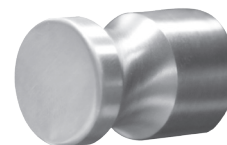
UNIT PRICE : 4,40 €



PRODUCT CODE **DAO1217**

EXPLANATION : ALUMINUM GRIP

UNIT PRICE : 3,00 €



PRODUCT CODE **DAO1818**

EXPLANATION : HINGE MDF  
UNIT PRICE : 1,05 €



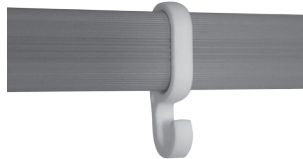
PRODUCT CODE **DAO1219**

EXPLANATION : HINGE COMPACT  
UNIT PRICE : 1,10 €



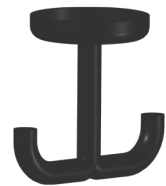
PRODUCT CODE **DAO1209**

EXPLANATION : PIPE  
3-HANGER  
UNIT PRICE : 2,00 €



PRODUCT CODE **DAO1210**

EXPLANATION : ANCHOR HANGER  
UNIT PRICE : 1,50 €



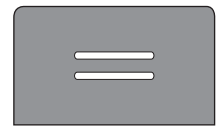
PRODUCT CODE **DAO1211**

EXPLANATION : PLASTIC GRILL  
UNIT PRICE : 2,50 €



PRODUCT CODE **DAO1212**

EXPLANATION : CNC GRILL  
UNIT PRICE : 2,00 €



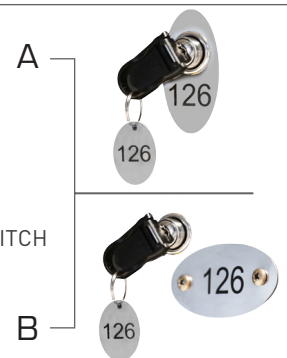
PRODUCT CODE **DAO1213**

EXPLANATION : ALUMINUM  
THUMBWHEEL SWITCH  
UNIT PRICE : 7,12 €



PRODUCT CODE **DAO1214**

EXPLANATION : STAINLESS  
THUMBWHEEL SWITCH  
UNIT PRICE : 7,98 €



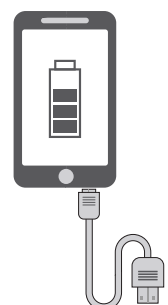
PRODUCT CODE **DAO1215**

EXPLANATION : PLEXI  
THUMBWHEEL SWITCH  
UNIT PRICE : 5,40 €



PRODUCT CODE **DAO1220**

EXPLANATION : USB CHARGING UNIT  
UNIT PRICE : Please Ask for Price



# ACCESSORY DISTRIBUTION TABLES BY CABINET TYPES

## SINGLE COVER LOCKERS

<b>LEG</b>	: 4 PCS
<b>LOCK</b>	: 1 PC
<b>HINGE</b>	: 3 PCS
<b>HANGER</b>	: 1 PC
<b>GRILL</b>	: 1 PC
<b>T. SWITCH</b>	: 1 PC
<b>GRIP</b>	: 1 PC



## TWO-COVER LOCKERS

<b>LEG</b>	: 4 PCS
<b>LOCK</b>	: 2 PC
<b>HINGE</b>	: 4 PCS
<b>HANGER</b>	: 2 PC
<b>GRILL</b>	: 2 PC
<b>T. SWITCH</b>	: 2 PC
<b>GRIP</b>	: 2 PC



## THREE-COVER LOCKERS

<b>LEG</b>	: 4 PCS
<b>LOCK</b>	: 3 PCS
<b>HINGE</b>	: 6 PCS
<b>HANGER</b>	: 3 PCS
<b>GRILL</b>	: 3 PCS
<b>T. SWITCH</b>	: 3 PCS
<b>GRIP</b>	: 3 PCS



## FOUR-COVER LOCKERS

<b>LEG</b>	: 4 PCS
<b>LOCK</b>	: 4 PCS
<b>HINGE</b>	: 8 PCS
<b>HANGER</b>	: - PCS
<b>GRILL</b>	: - PCS
<b>T. SWITCH</b>	: 4 PCS
<b>GRIP</b>	: 4 PCS



## FIVE-COVER LOCKERS

<b>LEG</b>	: 4 PCS
<b>LOCK</b>	: 5 PCS
<b>HINGE</b>	: 10 PCS
<b>HANGER</b>	: - PCS
<b>GRILL</b>	: - PCS
<b>T. SWITCH</b>	: 5 PCS
<b>GRIP</b>	: 5 PCS



## Z-COVER LOCKERS

<b>LEG</b>	: 4 PCS
<b>LOCK</b>	: 2 PCS
<b>HINGE</b>	: 6 PCS
<b>HANGER</b>	: 2 PCS
<b>GRILL</b>	: 2 PCS
<b>T. SWITCH</b>	: 2 PCS
<b>GRIP</b>	: 2 PCS





# COUNTER PANELS



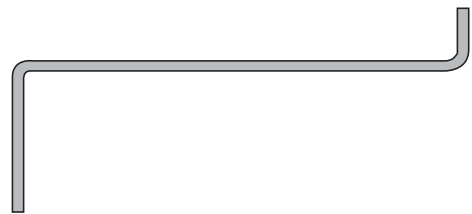
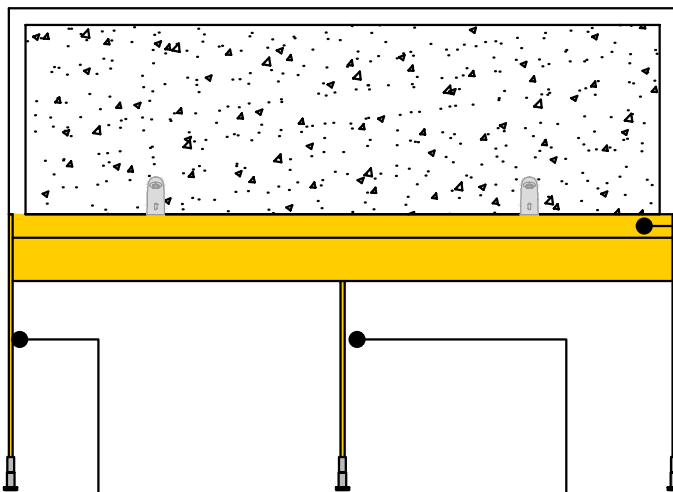


# 2 STEPS OF COUNTER PANEL PRICING

1

## COUNTER SURFACE OPTIONS

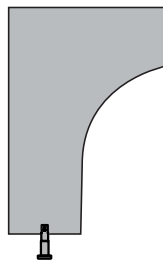
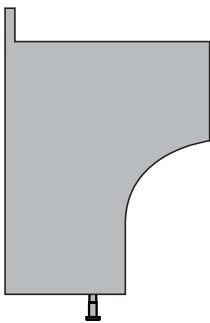
- 10701B010 - 10 MM FORMING SELF-ROTATING COUNTER PANEL
- 10701A012 - 12 MM PROFILE-ROTATING COUNTER PANEL



2

## SUPPORT PANEL OPTIONS

- 10702B012 - SIDE SUPPORT PANEL
- 10702A012 - INTERNAL SUPPORT PANEL



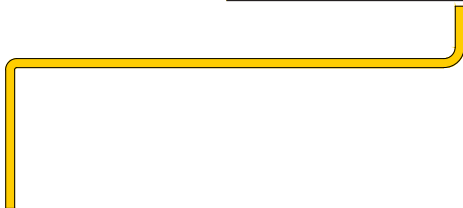
- or
- 10703A012 - CONSTRUCTION

## COUNTER PANELS

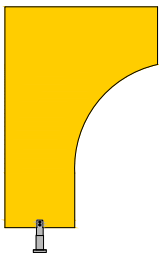
PRODUCT CODE	EXPLANATION	UNIT	U. PRICE*
<b>10701A012</b>	12 mm Profile-Rotating Counter Panel	MT	105,00 €
			* 1 meter counter price
	PANELS : 12 mm GENTAŞ Brand Compact Laminated		
	BASEBOARD : 80 mm		
	SURFACE : 600 mm		
	BOTTOM ROTATION : 150 mm		
	COLOR : <b>WHITE RAL 9003</b> <b>ANTHRACITE GRAY RAL 9007</b>		
	<b>BEIGE RAL 1015</b> <b>LIGHT GRAY RAL 7046</b>		



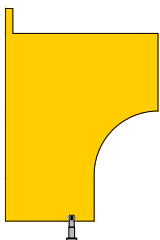
PRODUCT CODE	EXPLANATION	UNIT	U. PRICE*
<b>10701B010</b>	10 mm Forming Self-Rotating Counter Panel	MT	240,00 €
			* 1 meter counter price
	PANELS : 12 mm GENTAŞ Brand Compact Laminated		
	BASEBOARD : 80 mm		
	SURFACE : 600 mm		
	BOTTOM ROTATION : 150 mm		
	COLOR : <b>WHITE RAL 9003</b> <b>ANTHRACITE GRAY RAL 9007</b>		
	<b>BEIGE RAL 1015</b> <b>LIGHT GRAY RAL 7046</b>		



PRODUCT CODE	EXPLANATION	UNIT	U. PRICE*
<b>10702A012</b>	12 mm Compact Counter Internal Support P.	Set	70,00 €
			* Set price including accessories for 1 piece
	PANELS : 12 mm GENTAŞ Brand Compact Laminated		
	COLOR : <b>WHITE RAL 9003</b> <b>ANTHRACITE GRAY RAL 9007</b>		
	<b>BEIGE RAL 1015</b> <b>LIGHT GRAY RAL 7046</b>		



PRODUCT CODE	EXPLANATION	UNIT	U. PRICE*
<b>10702B012</b>	12 mm Compact Counter Side Support Panel	Set	86,00 €
			* Set price including accessories for 1 piece
	PANELS : 12 mm GENTAŞ Brand Compact Laminated		
	COLOR : <b>WHITE RAL 9003</b> <b>ANTHRACITE GRAY RAL 9007</b>		
	<b>BEIGE RAL 1015</b> <b>LIGHT GRAY RAL 7046</b>		



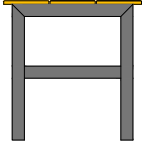
PRODUCT CODE	EXPLANATION	UNIT	U. PRICE*
<b>10703A012</b>	30*30 Anti-rust Carrier Construction	MT	22,50 €
<b>10703B012</b>	CNC Drain Opener Laborship	PC	10,00 €





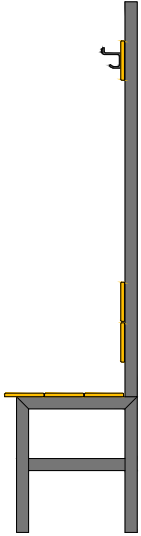
PRODUCTION QUALITY  
AT EUROPEAN STANDARDS

## BENCHES



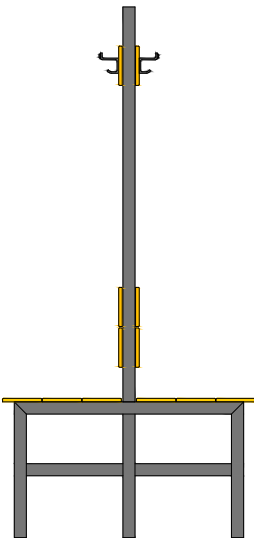
PRODUCT CODE	EXPLANATION	UNIT
10601A012	Standard Bench 75	Set
10601B012	Standard Bench 150	Set

PANELS	: 12 mm GENTAŞ Brand Compact Laminated	
HEIGHT	: 450 mm	
DEPTH	: 400 mm	
WIDTH	: 750 mm -1500 mm	
COLOR	: <b>WHITE RAL 9003</b>	<b>ANTHRACITE GRAY RAL 9007</b>
	<b>BEIGE RAL 1015</b>	<b>LIGHT GRAY RAL 7046</b>



PRODUCT CODE	EXPLANATION	UNIT
10602A012	Hanger Single Bench 75	Set
10602B012	Hanger Single Bench 150	Set

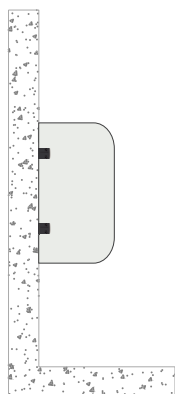
PANELS	: 12 mm GENTAŞ Brand Compact Laminated	
HEIGHT	: 1800 mm	
DEPTH	: 400 mm	
WIDTH	: 750 mm -1500 mm	
COLOR	: <b>WHITE RAL 9003</b>	<b>ANTHRACITE GRAY RAL 9007</b>
	<b>BEIGE RAL 1015</b>	<b>LIGHT GRAY RAL 7046</b>



PRODUCT CODE	EXPLANATION	UNIT
10603A012	Hanger Doubled Bench 75	Set
10603B012	Hanger Doubled Bench 150	Set

PANELS	: 12 mm GENTAŞ Brand Compact Laminated	
HEIGHT	: 1800 mm	
DEPTH	: 400 mm	
WIDTH	: 750 mm -1500 mm	
COLOR	: <b>WHITE RAL 9003</b>	<b>ANTHRACITE GRAY RAL 9007</b>
	<b>BEIGE RAL 1015</b>	<b>LIGHT GRAY RAL 7046</b>

CONNECTIONS : Aluminum Carrier Frame Profiles (White, Black, Gray)

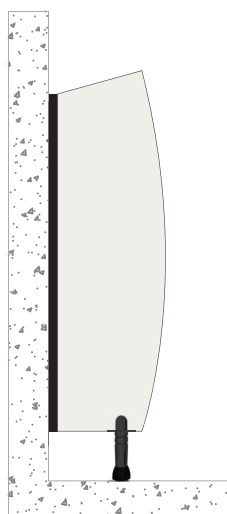


COMPACT SEPARATOR-75

PRODUCT CODE	EXPLANATION	UNIT	U. PRICE*
10301A012	Aluminum	Set	45,36 €
10302B012	Stainless	Set	64,56 €

\* Set price including accessories for 1 piece

PANELS : 12 mm GENTAŞ Brand Compact Laminated  
 HEIGHT : 750 mm  
 DEPTH : 380 mm  
 COLOR : **WHITE RAL 9003**      **ANTHRACITE GRAY RAL 9007**  
           **BEIGE RAL 1015**        **LIGHT GRAY RAL 7046**  
 CONNECTIONS : 304 Stainless Steel or Aluminum Connection

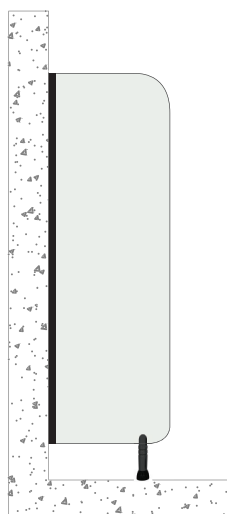


COMPACT SEPARATOR-120

PRODUCT CODE	EXPLANATION	UNIT	U. PRICE*
10401A012	Multisilver	Set	65,81 €
10402B012	Orion	Set	76,85 €
10403C012	Proxline	Set	73,49 €
10404D012	Stelline	Set	84,12 €

\* Set price including accessories for 1 piece

PANELS : 12 mm GENTAŞ Brand Compact Laminated  
 HEIGHT : 1200 mm  
 DEPTH : 380 mm  
 COLOR : **WHITE RAL 9003**      **ANTHRACITE GRAY RAL 9007**  
           **BEIGE RAL 1015**        **LIGHT GRAY RAL 7046**  
 CONNECTIONS : 304 Stainless Steel or Aluminum Connection



COMPACT SEPARATOR-180

PRODUCT CODE	EXPLANATION	UNIT	U. PRICE*
10501A012	Multisilver	Set	166,94 €
10502B012	Orion	Set	175,49 €
10503C012	Proxline	Set	172,13 €
10504D012	Stelline	Set	185,86 €

\* Set price including accessories for 1 piece

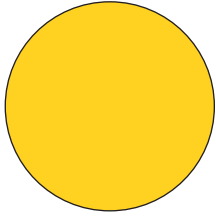
PANELS : 12 mm GENTAŞ Brand Compact Laminated  
 HEIGHT : 1800 mm  
 DEPTH : 700 mm  
 COLOR : **WHITE RAL 9003**      **ANTHRACITE GRAY RAL 9007**  
           **BEIGE RAL 1015**        **LIGHT GRAY RAL 7046**  
 CONNECTIONS : 304 Stainless Steel or Aluminum Connection

# TABLE PLATFORMS



- NATURAL WOOD SURFACES
- WATER RESISTANCE
- TROUBLE-FREE OUTDOOR USE
- WARRANTED BY TSE CERTIFICATE
- DECORATIVE

# TABLE PLATFORM



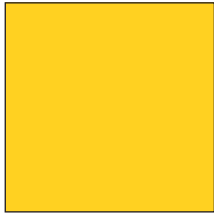
PRODUCT CODE	DIMENSION	EXPLANATION	PRICE*
SMT01201A	Ø 60 cm	Compact Laminated Table Platform	47,38 €
SMT01202A	Ø 70 cm	Compact Laminated Table Platform	56,85 €
SMT01203A	Ø 80 cm	Compact Laminated Table Platform	71,06 €

PANELS : 12 mm GENTAŞ Brand Compact Laminated

COLOR : **WHITE RAL 9003**      **ANTHRACITE GRAY RAL 9007**  
**BEIGE RAL 1015**      **LIGHT GRAY RAL 7046**

A	B	C	D
3660x1540	3660x1400	4200x1860	4200x1400

\*The prices given above are based on 3660x1540 plate measurements. Prices can vary depending on different plate sizes. Request price offer for your high quantity projects.



PRODUCT CODE	DIMENSION	EXPLANATION	PRICE*
SMT01205A	60x60 cm	Compact Laminated Table Platform	45,12 €
SMT01206A	70x70 cm	Compact Laminated Table Platform	54,14 €
SMT01207A	80x80 cm	Compact Laminated Table Platform	67,68 €

PANELS : 12 mm GENTAŞ Brand Compact Laminated

COLOR : **WHITE RAL 9003**      **ANTHRACITE GRAY RAL 9007**  
**BEIGE RAL 1015**      **LIGHT GRAY RAL 7046**

A	B	C	D
3660x1540	3660x1400	4200x1860	4200x1400

\*The prices given above are based on 3660x1540 plate measurements. Prices can vary depending on different plate sizes. Request price offer for your high quantity projects.



PRODUCT CODE	DIMENSION	EXPLANATION	PRICE*
SMT01208A	60x80 cm	Compact Laminated Table Platform	67,68 €
SMT01209A	60x120 cm	Compact Laminated Table Platform	90,24 €
SMT01210A	70x120 cm	Compact Laminated Table Platform	108,29 €
SMT01211A	70x140 cm	Compact Laminated Table Platform	108,29 €
SMT01212A	80x120 cm	Compact Laminated Table Platform	135,36 €
SMT01213A	80x140 cm	Compact Laminated Table Platform	135,36 €

PANELS : 12 mm GENTAŞ Brand Compact Laminated

COLOR : **WHITE RAL 9003**      **ANTHRACITE GRAY RAL 9007**  
**BEIGE RAL 1015**      **LIGHT GRAY RAL 7046**

A	B	C	D
3660x1540	3660x1400	4200x1860	4200x1400

\*The prices given above are based on 3660x1540 plate measurements. Prices can vary depending on different plate sizes. Request price offer for your high quantity projects.









**SAN** exclusive

**SANEXCLUSIVE** brand offers boutique products for your projects...  
For more information please visit our office ...



**SAN**DER®

Cendere Caddesi Ayazma Yolu No:6 Kağıthane İstanbul/Türkiye

444 3 955

info@sander.com.tr  
www.sander.com.tr

